



**Brisbane Central Business District Bicycle User Group
CBD BUG**

GPO Box 2104, Brisbane 4001

brisbanecbdbug@gmail.com

www.facebook.com/cbdbug/

The Right Honourable Cr Adrian Schrinner
Lord Mayor of Brisbane
GPO Box 2287
BRISBANE QLD 4001

Via email to: lord.mayor@brisbane.qld.gov.au

Dear Lord Mayor

I write to you on behalf of the Brisbane Central Business District Bicycle User Group (CBD BUG) regarding the increasing congestion and therefore conflict that is occurring at the Brisbane city entrance to the Howard Smith Wharves (HSW) development.

As background for you, the Brisbane CBD BUG is a grass roots volunteer organisation of more than 800 members, representing the interests of the very large number of Brisbane residents who ride bicycles to, from and within the Brisbane CBD. The CBD BUG actively seeks policy decisions at all levels of government that support cycling. In particular, the CBD BUG seeks improved infrastructure, end-of-trip facilities, integration of cycling with other transport modes and a cyclist-friendly regulatory environment.

In the two years since opening HSW has caused, and continues to cause, numerous issues which have detracted from the quality of the space for both patrons and the general public simply walking or cycling through the site. The Brisbane city entrance to HSW is increasingly becoming a congested bottleneck which is resulting in conflict between the various road user groups. What was originally planned to be a segregated path under DA A005062192 is now effectively a shared path due to HSW building over the dedicated pedestrian path (Figure 1). This has resulted in pedestrians walking on the dedicated cycle path when they want to access the shared turnaround zone (Figure 2). This location is now a safety hazard as HSW has permitted a restaurant to have its entrance on the dedicated cycle path (Figure 3). The arrangement is a safety hazard because people riding to the city are unable to see people exiting the restaurant (Figure 4).

To resolve this issue, the CBD BUG requests that kerb ramps be constructed by Council so people riding bicycles can avoid this bottleneck (Figure 5). According to the DA plans, the roundabout is on Brisbane City Council land (Figure 6).

As always, the CBD BUG is focused on ensuring the safety and amenity of active transport corridors. We ask for these corridors to be delivered and maintained to standards that avoid conflict between user groups. We hope this safety issue can be resolved before an incident occurs which results in injury to an individual.

Yours faithfully



Paul French
Co-convenor
Brisbane CBD BUG
11 January 2021

Cc:

Cr Ryan Murphy, Chairperson of Public and Active Transport Committee
Cr Jared Cassidy, Leader of the Opposition in Council and Opposition Spokesperson on Council's Public and Active Transport Committee
Cr Jonathan Sri, Councillor for The Gabba Ward and member of the Public and Active Transport Committee
Hon Grace Grace MP – McConnel
Cr Vicki Howard - Brisbane Central

Figure 1: Approved DA drawings indicating dedicated pedestrian and cycling paths

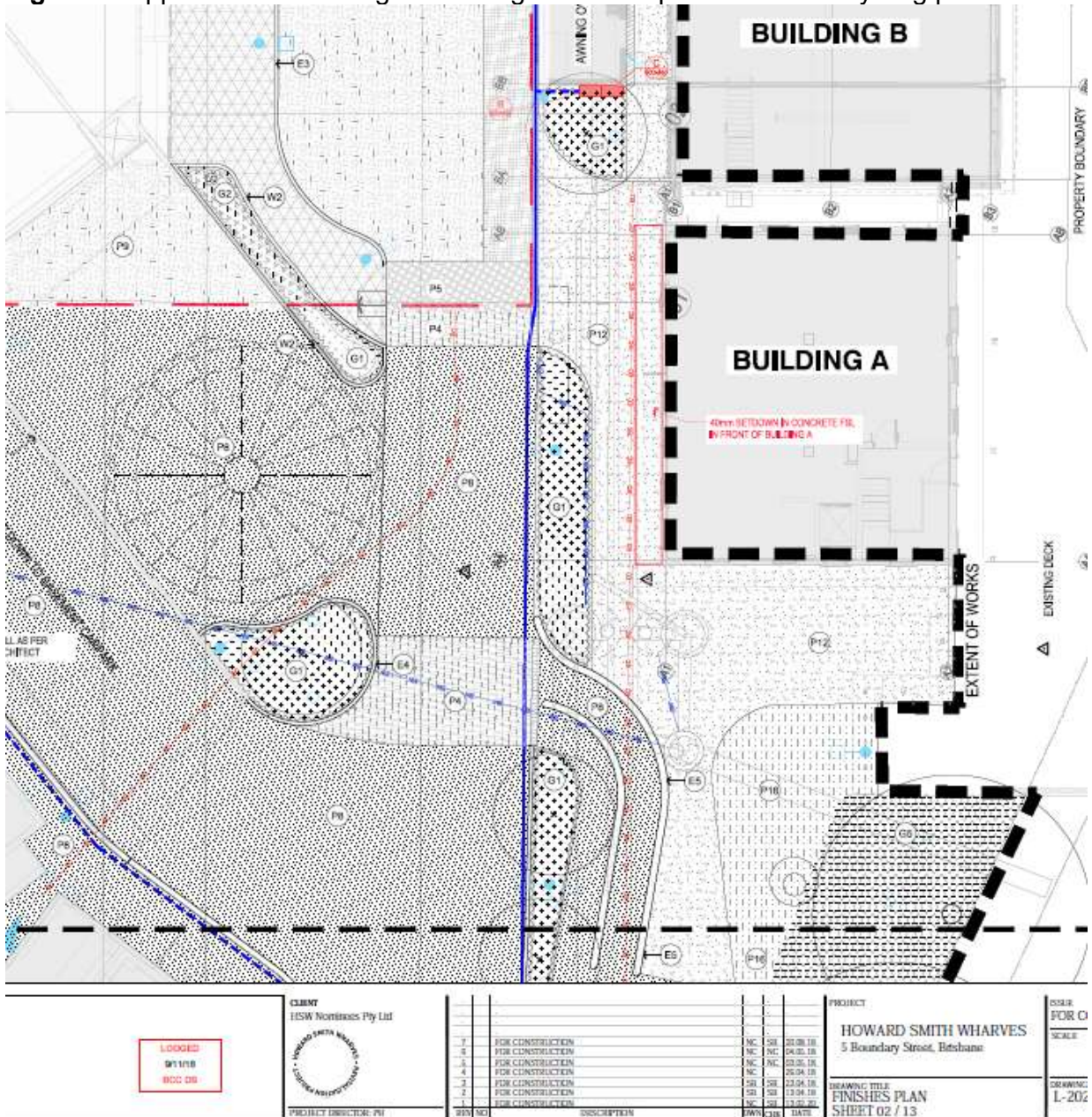


Figure 1: Building over the pedestrian path results in people walking on “bike” path



Figure 2: Restaurant outdoor space is occupying the pedestrian path space and opens onto bikepath



Figure 3: Restaurant entrance is highly concealed from city bound cycle traffic



Figure 4: Proposed kerb ramps to allow cycle traffic to avoid congested path

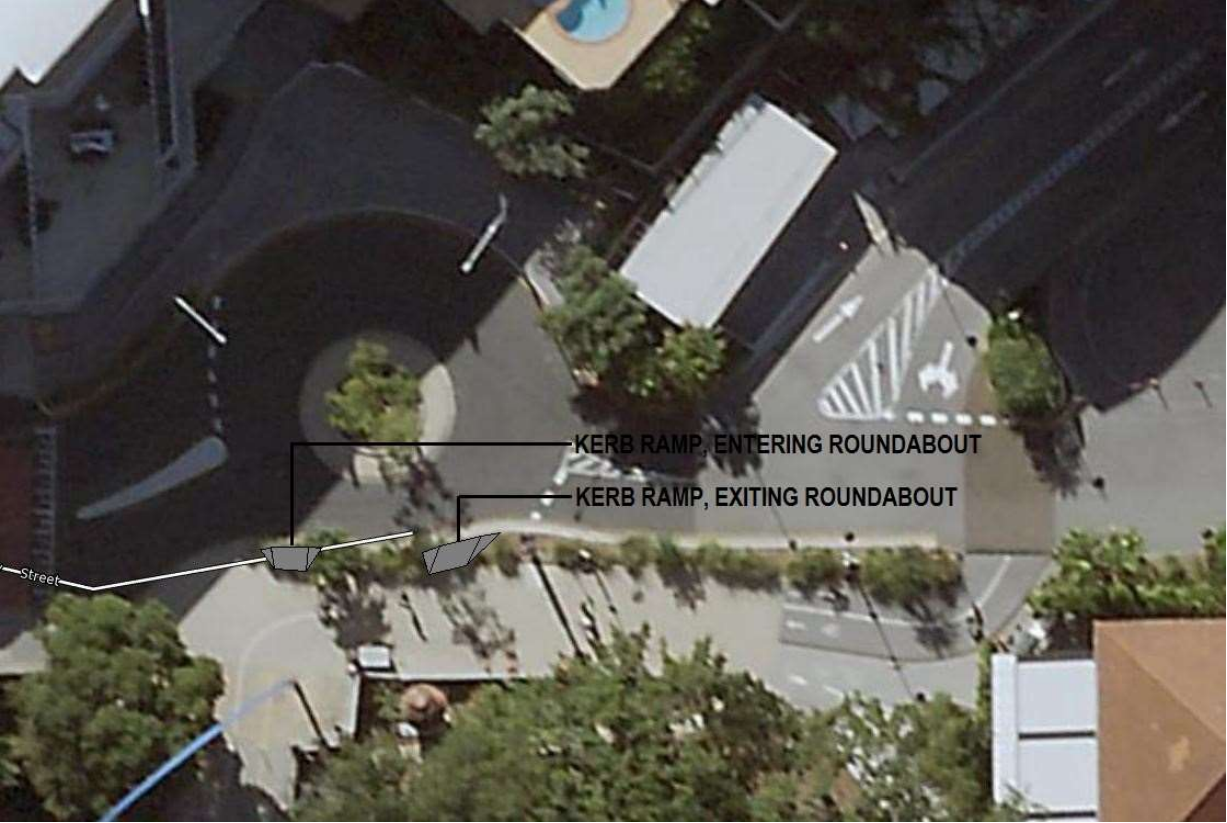


Figure 5: Approved DA plan showing roundabout is primarily on BCC property

